

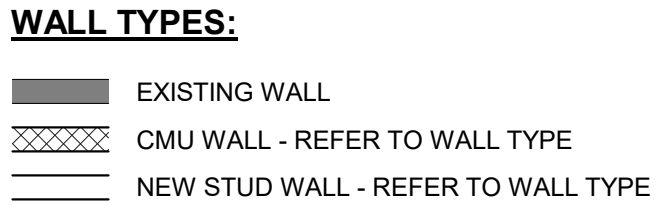
## Construction Documents



ARCHITECTS SINCE 1971

Assembly 201	Occupancy Load Factor (SF/Person):	Total Occupancy (# of People)
Total Area = 2,931 SF	-	-
Concentrated (chairs only) =	7	419
Standing Space =	5	587
Unconcentrated (tables and chairs) =	15	196

Total: 108 seats



## 1 SECOND FLOOR

Sheet Title:

Project Number 20.0400  
 Drawn By LH  
 Approved By Approver  
 Date 11 November  
 Revisions: 2022

Revisions:

- 
- 
- 
- 

1/31/2023 9:40:59 AM

CRYSTAL BEACH  
SWIMMING POOL  
Construction Documents

400 W VAUGHN DR.  
MADISON, IN 47250



Assembly 201	Occupancy Load Factor (SF/Person):	Total Occupancy (# of People)
Total Area = 2,931 SF	-	-
Concentrated (chairs only) =	7	419
Standing Space =	5	587
Unconcentrated (tables and chairs) =	15	196

(13) 8' Diameter Tables  
w/ (10) chairs ea.  
  
Total: 130 seats

22.11.11	CONSTRUCTION DOCUMENTS
22.11.04	CONSTRUCTION DOCUMENTS - N.F.C.
22.10.04	DEMOLITION PACKAGE - RE-BID ISSUE
22.09.02	DEMOLITION PACKAGE
DATE	DESCRIPTION

Architect:  
**K. NORMAN BERRY  
ASSOCIATES ARCHITECTS PLLC**  
815 W. Market Street  
Louisville, KY 40202  
502.582.2500

Aquatics:  
**COUNSILMAN-HUNSAKER**  
10733 Sunset Office Drive #400  
St. Louis, MO 63127  
314.894.1245

Structural Engineer:  
**KPFF CONSULTING ENGINEERS**  
125 6th St #200  
Louisville, KY 40202  
502.325.0100

MEP Engineer:  
**KERR-GREULICH ENGINEERS INC.**  
1534 Ormsby Station Ct.  
Louisville, KY 40223  
502.426.9457

Civil Engineer  
**JACOBI, TOOMBS, & LANZ INC.**  
1829 E Spring St #201  
New Albany, IN 47150  
812.945.9585

Sheet Title:

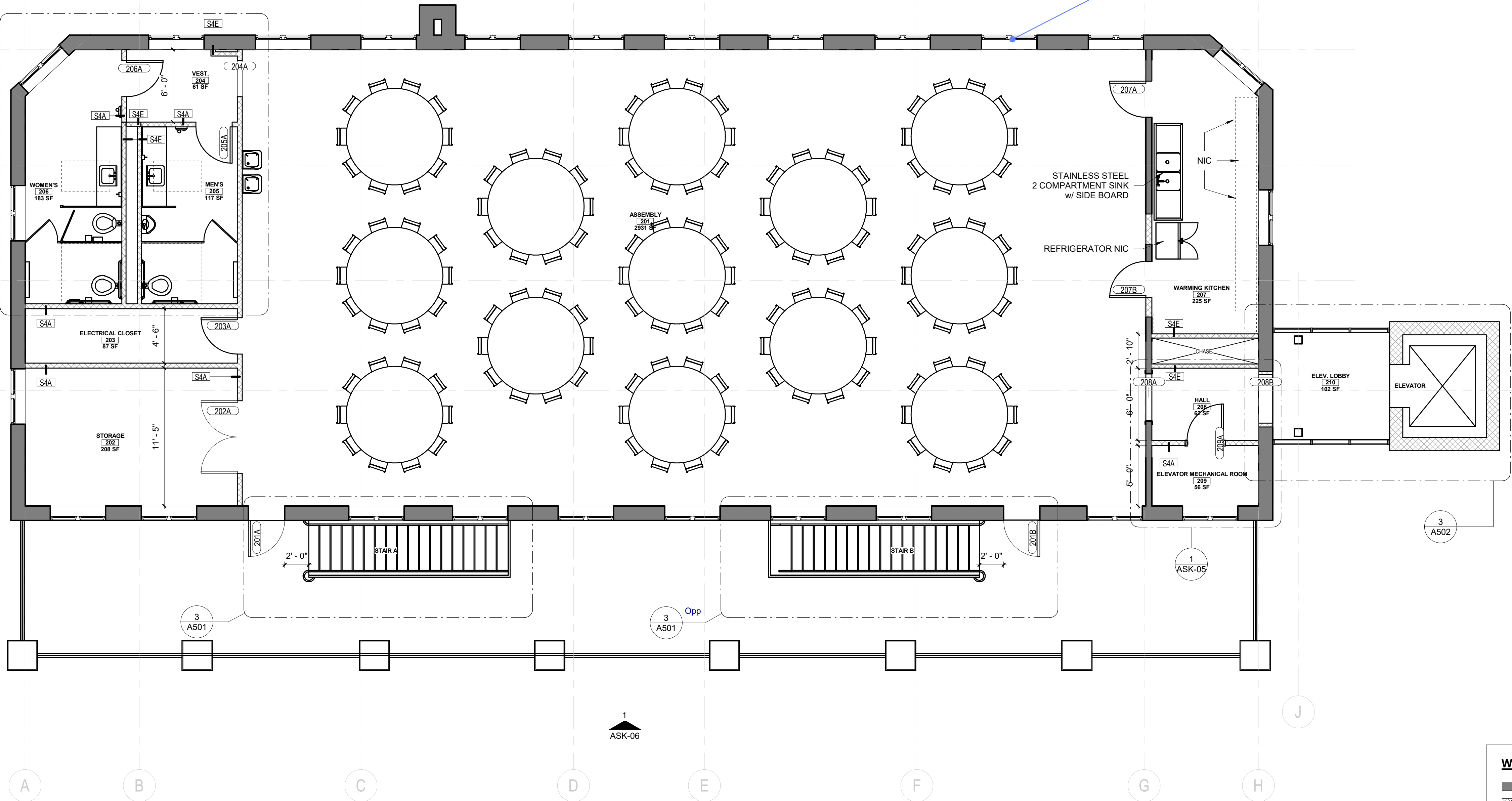
SECOND FLOOR  
PLAN

Project Number 20.0400  
Drawn By LH  
Approved By Approver  
Date 11 November 2022  
Revisions:

.  
. .  
. . .

A102

2/1/2023 8:37:24 AM



1 SECOND FLOOR  
3/16" = 1'-0"

**WALL TYPES:**  
EXISTING WALL  
CMU WALL - REFER TO WALL TYPE  
NEW STUD WALL - REFER TO WALL TYPE



CRYSTAL BEACH  
SWIMMING POOL  
Construction Documents

400 W VAUGHN DR.  
MADISON, IN 47250



Assembly 201	Occupancy Load Factor (SF/Person):	Total Occupancy (# of People)
Total Area = 2,931 SF	-	-
Concentrated (chairs only) =	7	419
Standing Space =	5	587
Unconcentrated (tables and chairs) =	15	196

(21) 8' x 2.5' Rectangular  
Tables w/ (8) chairs ea.  
  
Total: 168 seats

22.11.11	CONSTRUCTION DOCUMENTS
22.11.04	CONSTRUCTION DOCUMENTS - N.F.C.
22.10.04	DEMOLITION PACKAGE - RE-BID ISSUE
22.09.02	DEMOLITION PACKAGE
DATE	DESCRIPTION

Architect:  
**K. NORMAN BERRY  
ASSOCIATES ARCHITECTS PLLC**  
815 W. Market Street  
Louisville, KY 40202  
502.582.2500

Aquatics:  
**COUNSILMAN-HUNSAKER**  
10733 Sunset Office Drive #400  
St. Louis, MO 63127  
314.894.1245

Structural Engineer:  
**KPFF CONSULTING ENGINEERS**  
125 6th St #200  
Louisville, KY 40202  
502.325.0100

MEP Engineer:  
**KERR-GREULICH ENGINEERS INC.**  
1534 Ormsby Station Ct.  
Louisville, KY 40223  
502.426.9457

Civil Engineer  
**JACOBI, TOOMBS, & LANZ INC.**  
1829 E Spring St #201  
New Albany, IN 47150  
812.945.9585

Sheet Title:

SECOND FLOOR  
PLAN

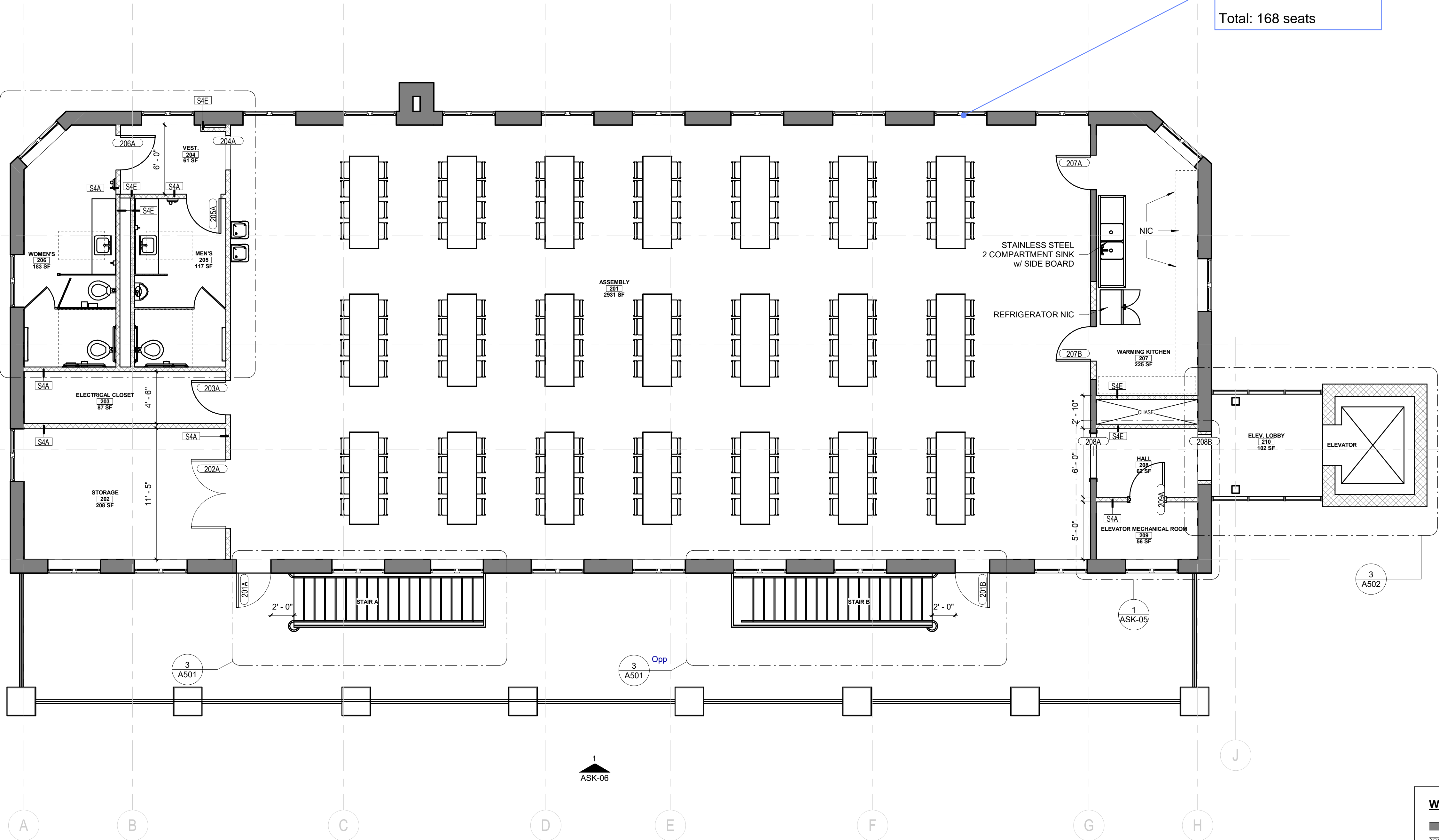
Project Number 20.0400  
Drawn By LH  
Approved By Approver  
Date 11 November 2022  
Revisions:

.  
. .  
. . .

A102

2/1/2023 8:30:53 AM

11 November 2022 Construction Documents



<b>WALL TYPES:</b>
EXISTING WALL
CMU WALL - REFER TO WALL TYPE
NEW STUD WALL - REFER TO WALL TYPE

1 SECOND FLOOR  
3/16" = 1'-0"